

IMPORTANT: Please read [Campus Access and Security](#) carefully for visitor screening procedures required by the NIH to access campus.

For general visitor information including directions to NIH and parking, click [here](#).

Once you clear the visitor center, you will be on South Drive near shuttle stops



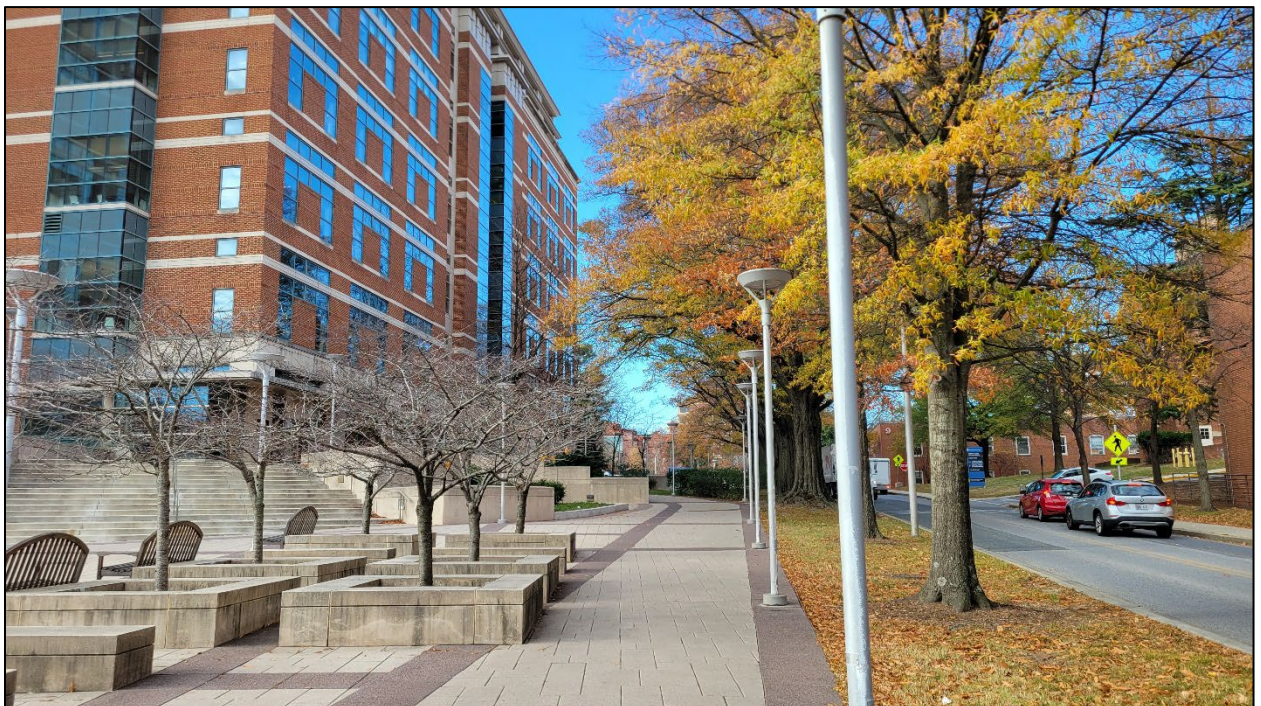
Walk down this road to the stop sign



Turn Left at the stop sign to continue down South Dr



Past the intersection, you will see building 50 on your left. Continue on the pedestrian path on south Dr





Continue towards the next intersection and look for the red clinical center Building 10 sign on your right



Cross the roads via crosswalks and head up the foot path on the left of the sign



Follow this curving trail to building 10

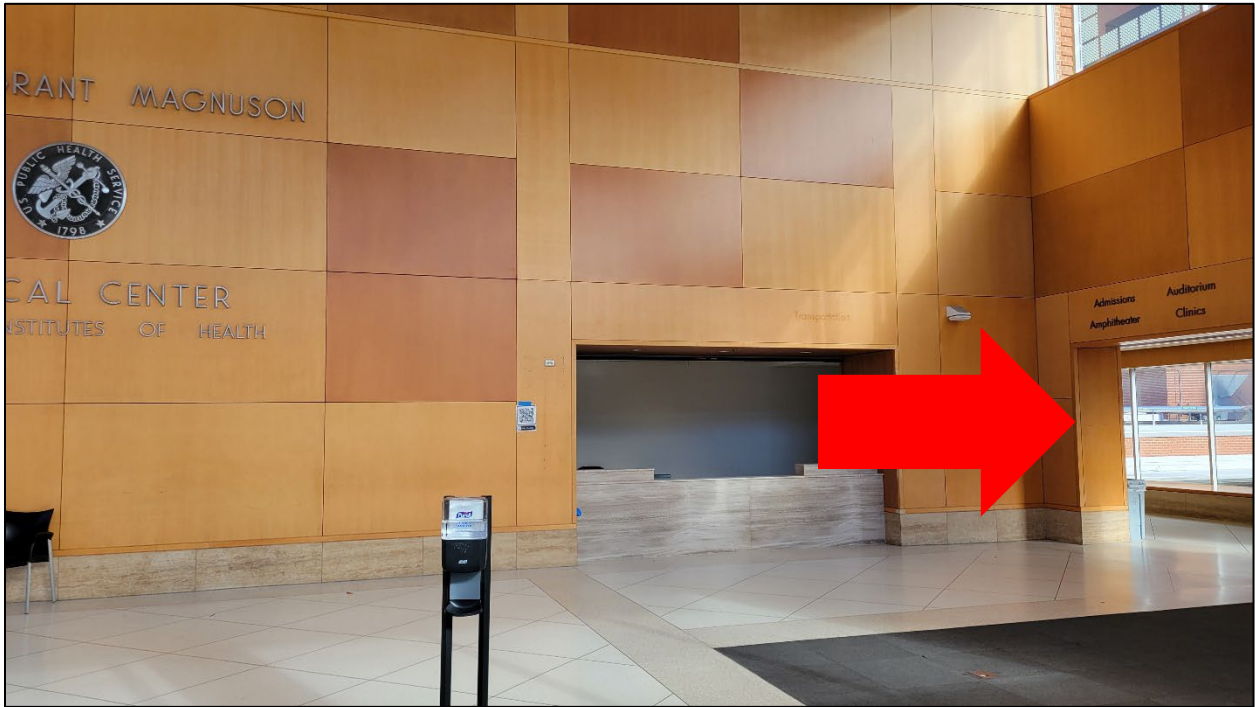


Enter these doors to access building 10





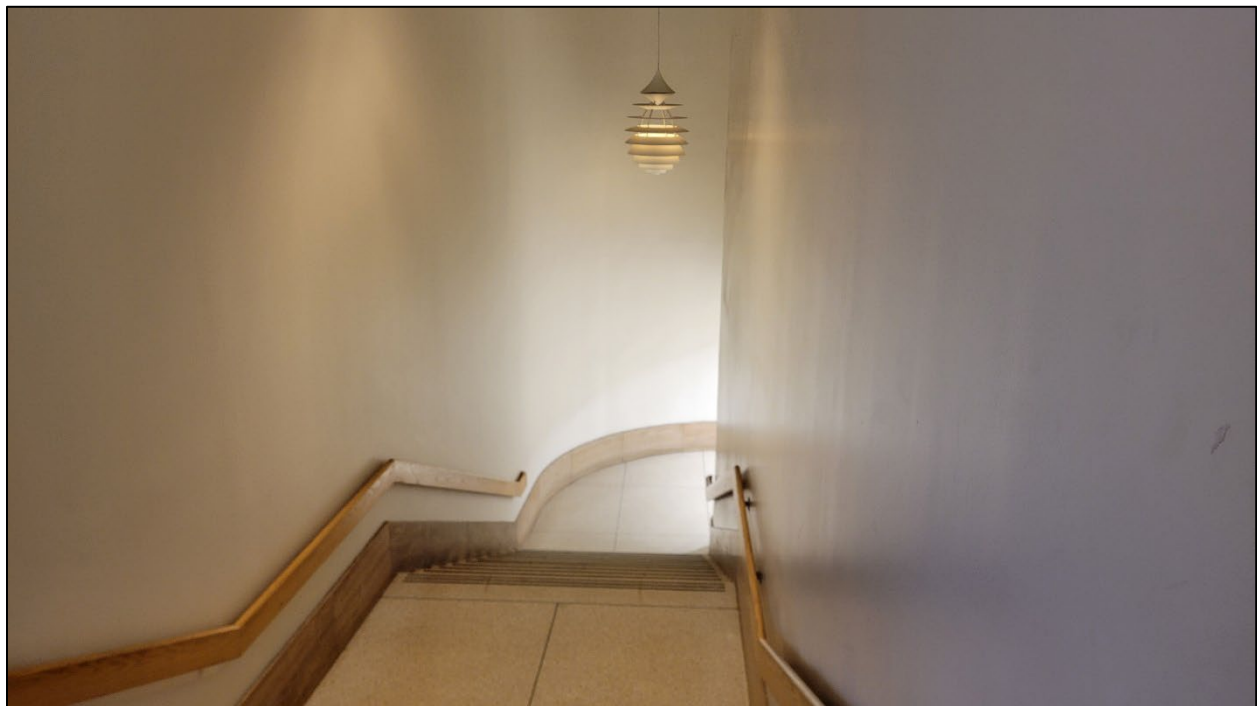
Proceed down the path to your right.



Once you enter this hallway, follow the overhead signs directing you downstairs towards the cafeteria.



Head down the stairs to your left.



Follow the signs towards the cafeteria. You will turn right at the **very end of this hallway**; the following images contain useful services available on this level that also serve as landmarks.



Landmark 1: You will pass the NIH Federal Credit Union on your right, continue past.



Landmark 2: Immediately past the Credit union you will see the cafeteria on your right. Continue past the cafeteria.



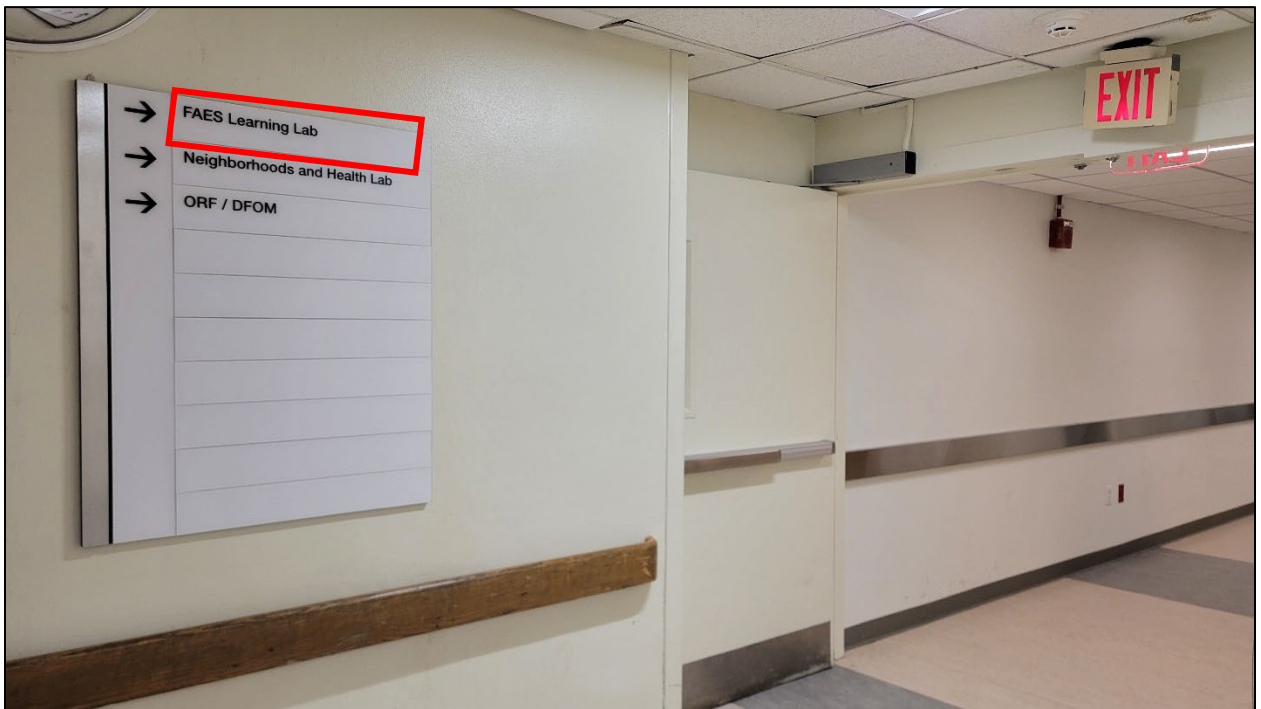
Landmark 3: On your left you will see the FAES gift shop (<https://shopfaes.com/>) on the B1 level



You will next reach a bank of four elevators. Continue to the end of the hallway.



Turn right at the sign directing you to the FAES Learning Lab



Proceed down this hallway, the lab suite is on your right near the end of the hallway.



Congratulations, you have now reached the FAES lab suite (B1N206)

